



REQUEST FOR MODIFICATION TO AUTHORIZATION CERTIFICATE N0 3215-14-007 FOR PHASE 2A PROJECTS

**Additional information: maps with aerial photographs of sites
included in the request**

December 2023

Canadian Royalties inc.
Nunavik Nickel Project

December 2023

Maps with up-to-date aerial photographs of the sites included in the request for modification to the certificate of authorization for Phase 2a

In context

Canadian Royalties Inc (CRI) submitted in June 2022 a request to modify the certificate of authorization (hereinafter global CA) of the Nunavik Nickel Mining Project (V/Ref.: 3215-14-007) (NNiP) under section 201 of Chapter II of the *Environmental Quality Act* for Phase 2a. This modification request was made in the form of an addendum to the environmental and social impact study (ESIA) submitted in 2007 to obtain the global CA and is currently being analyzed by the MELCCFP

In the second questions and comments document from the MELCCFP and the Kativik Environmental Quality Commission (KEQC), relating to the request for modification to global CA for the Mesamax UG and waste rock pile, Expo 2 and 2b quarries , esker 2b, helipads project, received on August 4th 2023, it was indicated at QC2-18 that CRI must provide maps with up-to-date aerial photographs of the operating sites in progress or under analysis; the wording is transcribed below.

“QC 2 - 18. The promoter must provide an update of the work planned and carried out for the next two years. The promoter must commit to providing this update every six months throughout the project.

Also, the proponent must provide a map presenting an up-to-date aerial photograph of each of the operating sites in progress or under analysis by superimposing the areas under study, the authorized areas as well as the limits of the infrastructures. The promoter must undertake to attach such a card to his annual report. »

Considering that the phase 2a projects are currently being analyzed by the MELCCFP, CRI is now sending the maps of the sites included in the modification request for these projects. The maps included in this document are those of the Ivakkak, Méquillon, Expo, Nanaujaq sites and the northern landfill site. The maps, produced by the firm Aecom, include photos taken by drone in August 2023 on the various NNiP sites. It should be noted that the ministerial authorizations for open-air exploitation of the Expo, Méquillon and Ivakkak sites were issued respectively in 2011, 2018 and 2022. Thus, for certain sites, a perimeter of authorized area or studied area was not available for overlay on the map. The photos, however, allow to accurately reflect the limits of the infrastructure.

Hoping these cards will be to the satisfaction of the MELCCFP,



Directeur Environnement



**SITE
IVAKKAK OP**

**Zone d'étude
2020-2022 /
2020-2022 Study Area**

**Zone d'étude 2022 /
2022 Study Area**

**Zone d'étude 2021 /
2021 Study Area**

**Zone d'étude 2020 /
2020 Study Area**

Composantes du projet / Project Components

- Zone d'étude / Study Area
- Zone impactée / Impacted Area
- Bail minier ou industriel / Mining or Industrial Lease
- ▶ Sens de l'écoulement de fossé d'eau propre / Flow Direction of Clean Water Ditch
- ▶ Sens de l'écoulement de fossé d'eau contaminé / Flow Direction of Contact Water Ditch

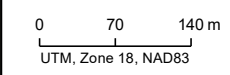
Hydrographie / Hydrography

- Cours d'eau permanent / Permanent Watercourse
- Cours d'eau intermittent / Intermittent Watercourse
- Plan d'eau / Waterbody

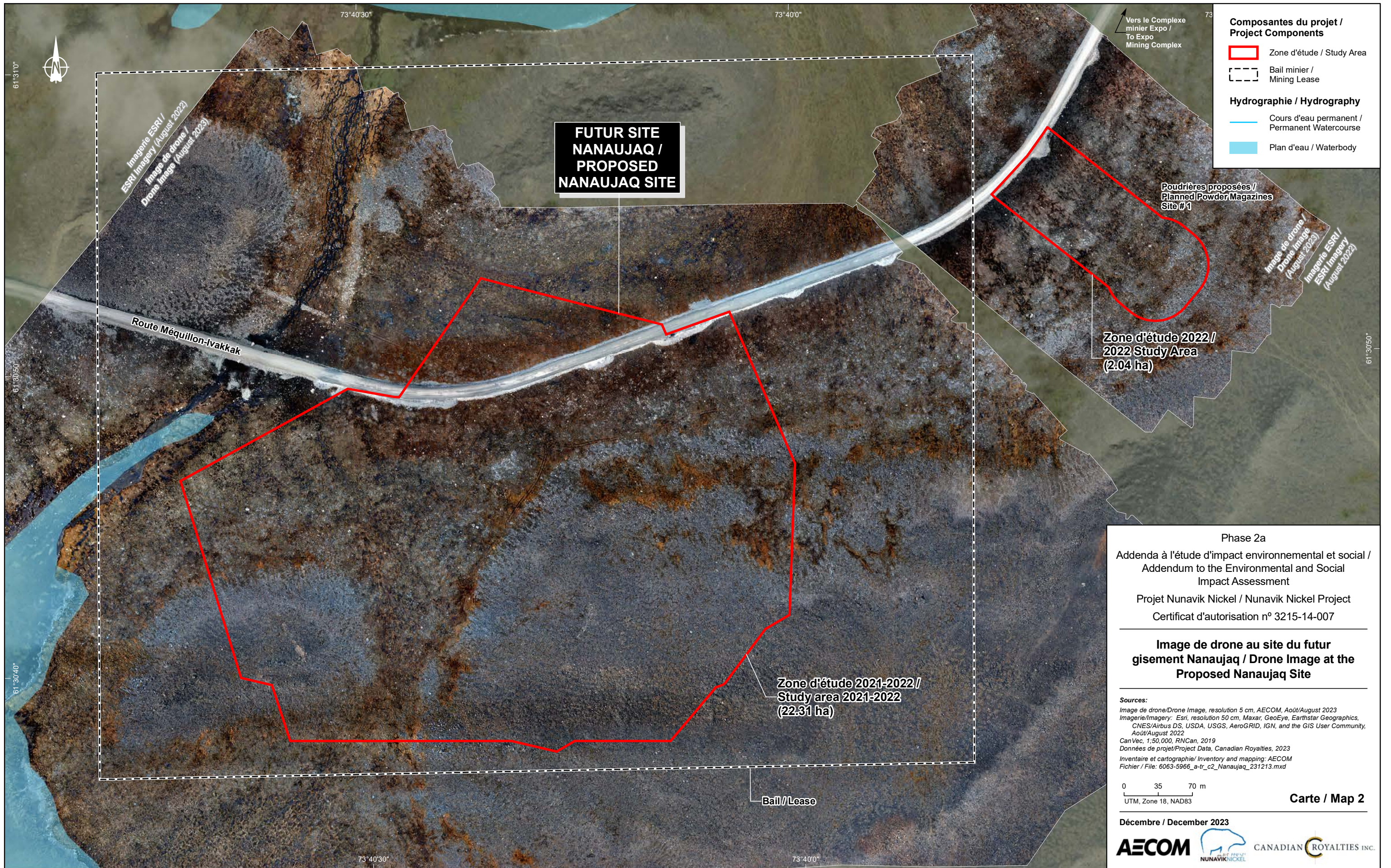
Phase 2a
 Addenda à l'étude d'impact environnemental et social /
 Addendum to the Environmental and Social
 Impact Assessment
 Projet Nunavik Nickel / Nunavik Nickel Project
 Certificat d'autorisation n° 3215-14-007

**Image de drone au gisement Ivakkak
 et infrastructures / Drone Image at the
 Ivakkak Site and Infrastructures**

Sources:
 Image de drone/Drone Image, resolution 5 cm, AECOM, Septembre/September 2023
 Imagerie/Imagery: Esri, resolution 31 cm, Maxar, GeoEye, Earthstar Geographics,
 CNES/Airbus DS, USDA, USGS, AeroGRID, IGN, and the GIS User Community,
 Septembre/September 2021
 CanVec, 1:50,000, RNCAN, 2019
 Données de projet/Project Data, Canadian Royalties, 2023
 Inventaire et cartographie/ Inventory and mapping: AECOM
 Fichier / File: 6063-5966_a-tr_c1_ivakkak_231213.mxd



Carte / Map 1



Composantes du projet / Project Components

- Zone d'étude / Study Area
- Bail minier / Mining Lease

Hydrographie / Hydrography

- Cours d'eau permanent / Permanent Watercourse
- Plan d'eau / Waterbody

**FUTUR SITE
NANAUAQ /
PROPOSED
NANAUAQ SITE**

**Zone d'étude 2022 /
2022 Study Area
(2.04 ha)**

**Zone d'étude 2021-2022 /
Study area 2021-2022
(22.31 ha)**

Bail / Lease

Phase 2a
Addenda à l'étude d'impact environnemental et social /
Addendum to the Environmental and Social
Impact Assessment
Projet Nunavik Nickel / Nunavik Nickel Project
Certificat d'autorisation n° 3215-14-007

**Image de drone au site du futur
gisement Nanaujaq / Drone Image at the
Proposed Nanaujaq Site**

Sources:
Image de drone/Drone Image, resolution 5 cm, AECOM, Août/August 2023
Imagerie/Imagery: Esri, resolution 50 cm, Maxar, GeoEye, Earthstar Geographics,
CNES/Airbus DS, USDA, USGS, AeroGRID, IGN, and the GIS User Community,
Août/August 2022
CanVec, 1:50,000, RINCan, 2019
Données de projet/Project Data, Canadian Royalties, 2023
Inventaire et cartographie/ Inventory and mapping: AECOM
Fichier / File: 6063-5966_a-tr_c2_Nanaujaq_231213.mxd

0 35 70 m
UTM, Zone 18, NAD83

Carte / Map 2



SITE MÉQUILLON

Composantes du projet / Project Components

- Zone d'étude / Study Area
- Bail / Lease
- ▶ Sens de l'écoulement de fossé d'eau contaminé / Flow Direction of Contact Water Ditch

Hydrographie / Hydrography

- Cours d'eau permanent / Permanent Watercourse
- Plan d'eau / Waterbody

L'ensemble des milieux humides empiétés par les infrastructures ont été quantifiés dans le cadre de l'autorisation de l'exploitation à ciel ouvert de Méquillon et sont au PAECI. / All Wetlands Impacted by Infrastructures were Quantified as Part of the Authorization for Open-pit Mining of Méquillon and are in the PAECI.

Phase 2a
 Addenda à l'étude d'impact environnemental et social /
 Addendum to the Environmental and Social
 Impact Assessment
 Projet Nunavik Nickel / Nunavik Nickel Project
 Certificat d'autorisation n° 3215-14-007

**Image de drone au gisement Méquillon
 et infrastructures / Drone Image at the
 Méquillon Site and Infrastructures**

Sources:
 Image de drone/Drone Image, resolution 5 cm, AECOM, Septembre/September 2023
 Imagerie/Imagery: Esri, resolution 50 cm, Maxar, GeoEye, Earthstar Geographics,
 CNES/Airbus DS, USDA, USGS, AeroGRID, IGN, and the GIS User Community,
 Août/August 2022
 Géobase du réseau hydrographique du Québec (GRHQ), MERN Québec, nov. 2019
 Données de projet/Project Data, Canadian Royalties, 2023
 Inventaire et cartographie/Inventory and mapping: AECOM
 Fichier/File: 6063-5966_a-tr_c3_Mequillon_231213.mxd

0 80 160 m
 UTM, Zone 18, NAD83

Carte / Map 3



Composantes du projet / Project Components

- Bail d'exploitation ou industriel / Operating or Industrial Lease
- Limite du site / Boundary Site

Hydrographie / Hydrography

- Plan d'eau / Waterbody

Phase 2a
 Addenda à l'étude d'impact environnemental et social /
 Addendum to the Environmental and Social
 Impact Assessment
 Projet Nunavik Nickel / Nunavik Nickel Project
 Certificat d'autorisation n° 3215-14-007

**Imagerie au site du lieu d'enfouissement
 nordique (LEMN) /
 Imagery at Northern Landfill**

Sources:
 Imagerie/Imagery: Esri, resolution 50 cm, Maxar, GeoEye, Earthstar Geographics, CNES/Airbus DS, USDA, USGS, AeroGRID, IGN, and the GIS User Community, Août/August 2022
 Géobase du réseau hydrographique du Québec (GRHQ), MERN Québec, nov. 2019
 Données de projet/Project Data, Canadian Royalties, 2022
 Cartographie/Mapping: AECOM
 Fichier/File: 6063-5966_a-tr_c4_LEMN_231213.mxd

0 25 50 m
 UTM, Zone 18, NAD83

Carte / Map 4

Décembre / December 2023

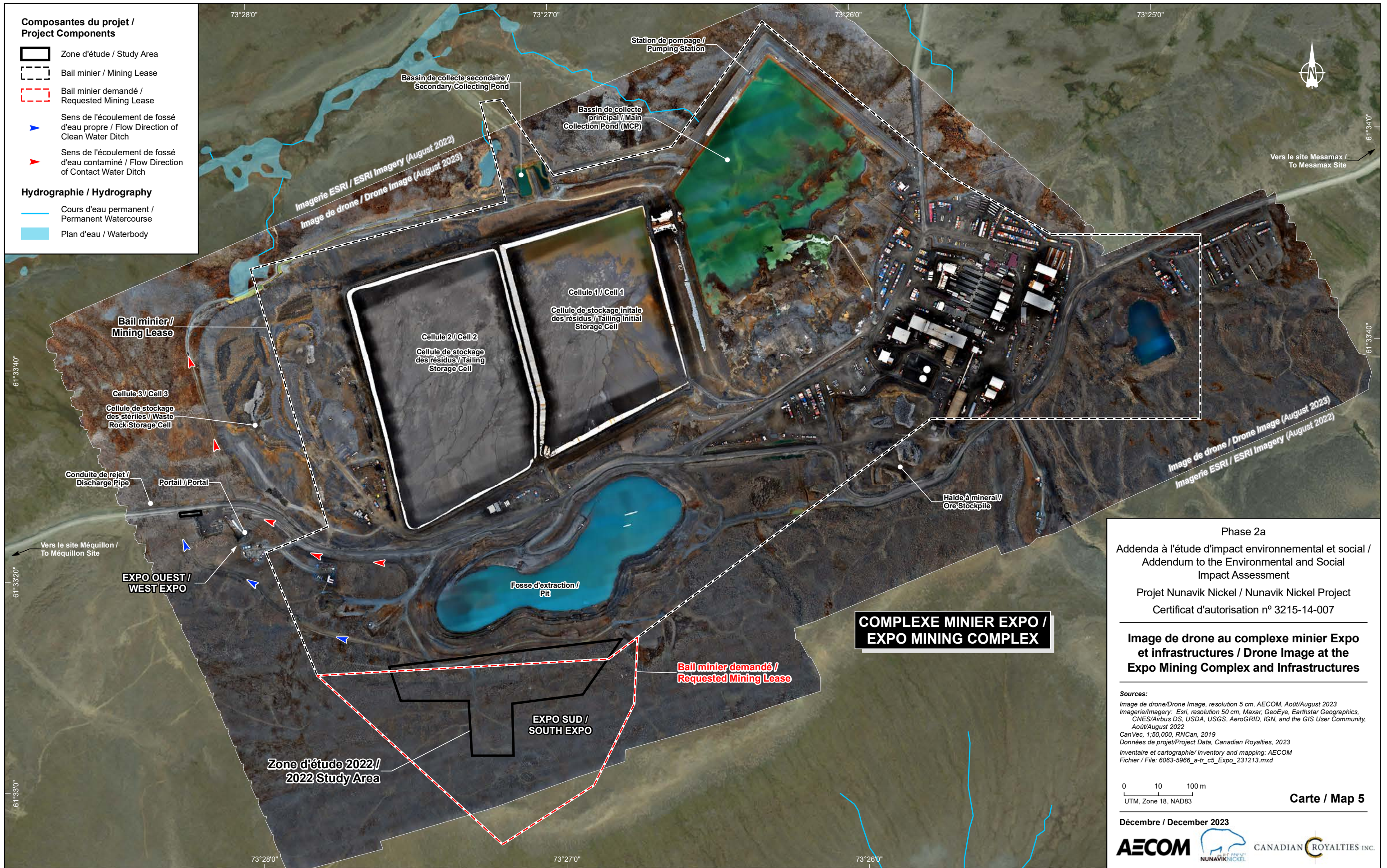
Composantes du projet / Project Components

- Zone d'étude / Study Area
- Bail minier / Mining Lease
- Bail minier demandé / Requested Mining Lease

- Sens de l'écoulement de fossé d'eau propre / Flow Direction of Clean Water Ditch
- Sens de l'écoulement de fossé d'eau contaminé / Flow Direction of Contact Water Ditch

Hydrographie / Hydrography

- Cours d'eau permanent / Permanent Watercourse
- Plan d'eau / Waterbody



COMPLEXE MINIER EXPO / EXPO MINING COMPLEX

Phase 2a
 Addenda à l'étude d'impact environnemental et social /
 Addendum to the Environmental and Social
 Impact Assessment
 Projet Nunavik Nickel / Nunavik Nickel Project
 Certificat d'autorisation n° 3215-14-007

**Image de drone au complexe minier Expo
 et infrastructures / Drone Image at the
 Expo Mining Complex and Infrastructures**

Sources:
 Image de drone/Drone Image, resolution 5 cm, AECOM, Août/August 2023
 Imagerie/imagery: Esri, resolution 50 cm, Maxar, GeoEye, Earthstar Geographics,
 CNES/Airbus DS, USDA, USGS, AeroGRID, IGN, and the GIS User Community,
 Août/August 2022
 CanVec, 1:50,000, RNCAN, 2019
 Données de projet/Project Data, Canadian Royalties, 2023
 Inventaire et cartographie/ Inventory and mapping: AECOM
 Fichier / File: 6063-5966_a-tr_c5_Expo_231213.mxd

0 10 100 m
 UTM, Zone 18, NAD83

Carte / Map 5