

Biophysical and Human Environment Extended Study Area

Sources:
 Orthophoto, resolution 7 cm, MERN Québec, © Gouvernement du Québec, 2016
 Orthophoto (Pigapic), resolution 5 m, © Gouvernement du Québec, 2010
 BDVA, 1:2,000, MERN Québec, avril 2013
 CanVec, 1:50,000, RNCAN, 2018, © Her Majesty the Queen in Right of Canada, reproduced with the permission of RNCAN
 Adresses Québec, MERN Québec, April 1, 2021
 Adresses Québec réseau, MERN Québec, March 1, 2021
 BGAR, HOIESP, January 2020
 Carte de données sur le patrimoine naturel du Québec (CDPND), MFFP Québec, October 2019
 Géobase du réseau hydrographique du Québec (GRHQ), MERN Québec, November 2019
 Inventaire des sites archéologiques du Québec (ISAQ), MAC Québec, July 2020
 Kangiqsujaq Master Plan 2016-2026, Kangivik Regional Government, 2016
 Municipal drinking water intakes, MELCC Québec, August 2018
 SDA, 1:20,000, MERN Québec, April 2021
 Territoire d'application des conventions nordiques, MERN Québec, 2015
 Végétation du Nord québécois, MFFP Québec, 2013
 Project data, Hydro-Québec, May 2023

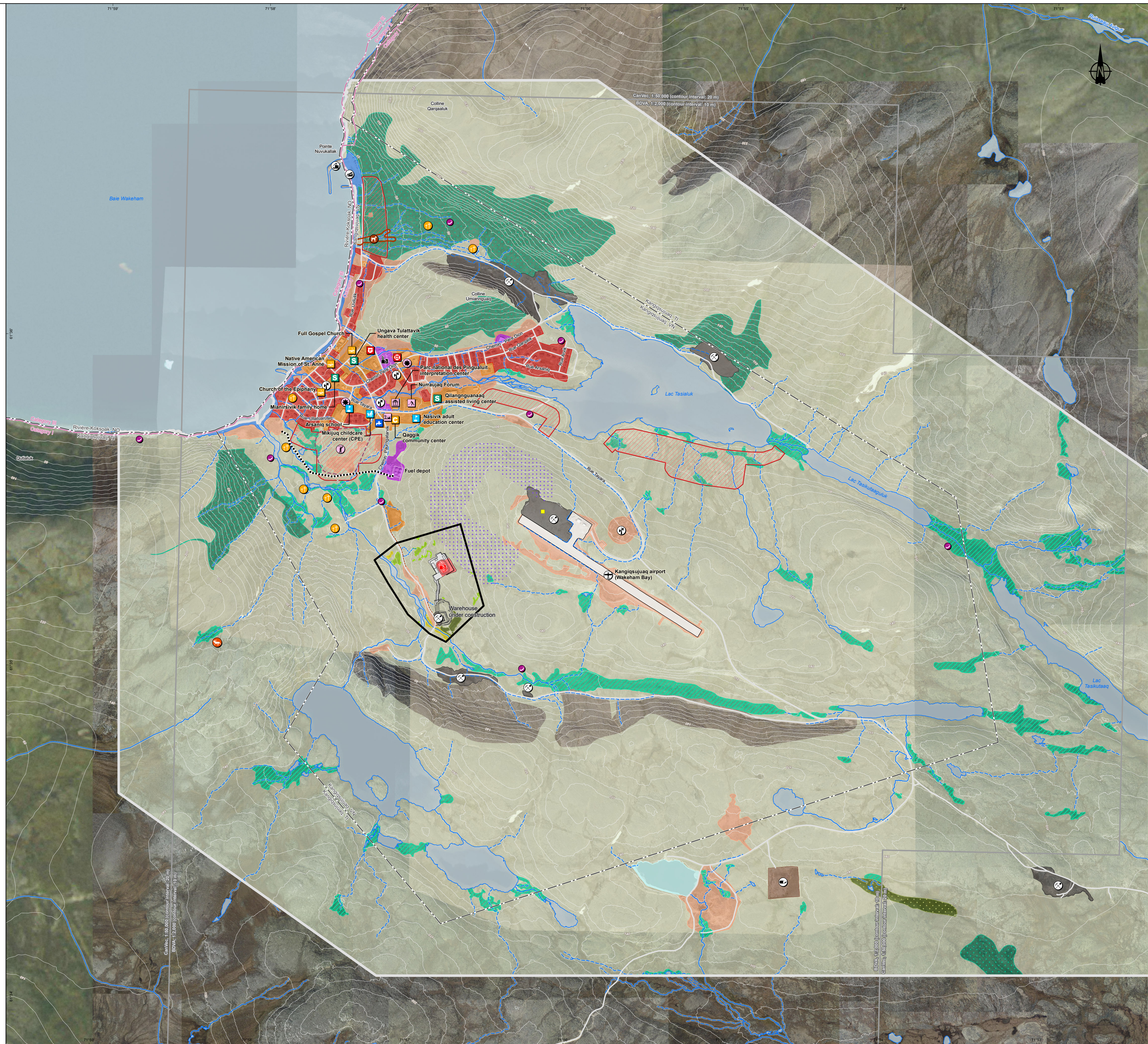
Inventory: SNC-Lavalin and Avataq Cultural Institute
 Mapping: SNC-Lavalin
 File: 5119_eiKA_02_mnh_zelarge_230725a.mxd

0 100 200 300 m
 MTM, Zone 7, NAD83 (CSRS)
 Contour interval: 10 m

Map A



July 2023



- Physical environment**
- Air and soil quality**
 - Weather station
- Hydrography**
 - Perennial stream
 - Intermittent stream
 - Stream with indeterminate flow
 - Water body
 - Ditch
- Biological environment**
- Terrestrial environment**
 - Shrub tundra
 - Dry barrens
- Wetlands**
 - Potential wetlands**
 - Open fen (Cartographie des milieux humides potentiels du Québec, MELCC Québec, November 2019)
 - Shrub swamp (Cartographie des milieux humides potentiels du Québec, MELCC Québec, November 2019)
 - Undefined swamp (Base de données des villages autochtones (BDVA), 1:2,000, MRN Québec, April 2013)
 - Characterized wetlands (2022)**
 - Open bog
 - Open fen
 - Marsh
- Special-status plant species**
 - Special-status plant species
- Special-status wildlife species**
 - Peregrine falcon (in flight)
- Other wildlife species (SNC-Lavalin, 2022)**
 - Barren-ground caribou (4 individuals)
- Human environment**
- Boundaries**
 - Municipality
 - Category I and II lands
- Urban environment**
 - Residential sector
 - Institutional and commercial sector
 - Industrial sector
 - Potential development sector
 - Multi-use riverbank
 - Other disturbed environment
- Traditional activity**
 - Wild berry-picking area
- Public services and infrastructure**
 - Airport
 - Commercial wharf
 - Boat ramp
 - Thermal generating station
 - Oil pipeline
 - Telecommunications antenna
- Water treatment and intake**
 - Drinking water intake
 - Drinking water intake pipe
 - Edge of watershed for drinking water intake
- Water treatment and infrastructure**
 - Water treatment plant
 - Treatment pond
 - Northern landfill
 - Police station
 - Fire station
 - Community center
 - Place of worship
 - Cemetery
- Recreational activities**
 - Interpretation center
 - Arena
 - Public pool
 - Golf course
 - Playground
 - Sled dog kennel
- Mining extraction**
 - Active or abandoned mining site
- Education and social services**
 - School or training center
 - Childcare center (CPE)
 - Health or social services center
- Archaeology**
 - Known archaeological site
- Project components**
 - Planned thermal generating station
 - Project footprint (generating station)
 - Project footprint (portion not in scope)
 - Infrastructure
 - Extended study area
 - Limited study area

**To protect special-status species from harvesting and changes to their habitat, data from the Ministère des Forêts, de la Faune et des Parcs du Québec (MFFP), other agencies or field inventories are not shown despite their presence in the map area.
 ***To protect municipal drinking water intakes and respect MELCC directives on the use of this data, the municipal drinking water intakes are not shown despite their presence in the map area.