

Physical environment

Air and soil quality

- Weather station
- Contaminated site

Hydrography

- Perennial watercourse
- Indeterminate watercourse
- Water body

Biological environment

Terrestrial environments

- Shrub tundra
- Dry barrens

Wetlands

Potential wetlands

- Undefined fen (Cartographie des milieux humides potentiels du Québec, MELCC Québec, November 2019)
- Undefined fen (Base de données des villages autochtones (BDVA), 1:2,000, MRN Québec, April 2013)

Characterized wetlands (2020)

- Open fen
- Shrub swamp
- Marsh

Special-status plant species

- Unmapped restricted data*
- Oriental peat moss

Special-status wildlife species

- Unmapped restricted data*
- Red-necked phalarope

Human environment

Boundary

- Municipality

Urban environment

- Residential sector
- Institutional and commercial sector
- Industrial sector
- Potential development sector
- Multi-use riverbank
- Other disturbed environment

Utilities and infrastructure

- Airport
- Commercial wharf
- Community wharf
- Boat ramp
- Thermal generating station
- Oil pipeline
- Telecommunications antenna
- Unmapped restricted data**
- Drinking water intake
- Water treatment plant
- Treatment pond
- Northern landfill
- Police station
- Fire station
- Place of worship
- Cemetery

Land use

- Gathering place
- Waterfowl hunting area

Recreational activities

- Arena
- Outdoor skating rink
- Public pool
- Baseball field
- Playground

Mining extraction

- Active surface mineral extraction claim
- Active mining claim (exclusive lease)
- Active or abandoned mining site

Education and social services

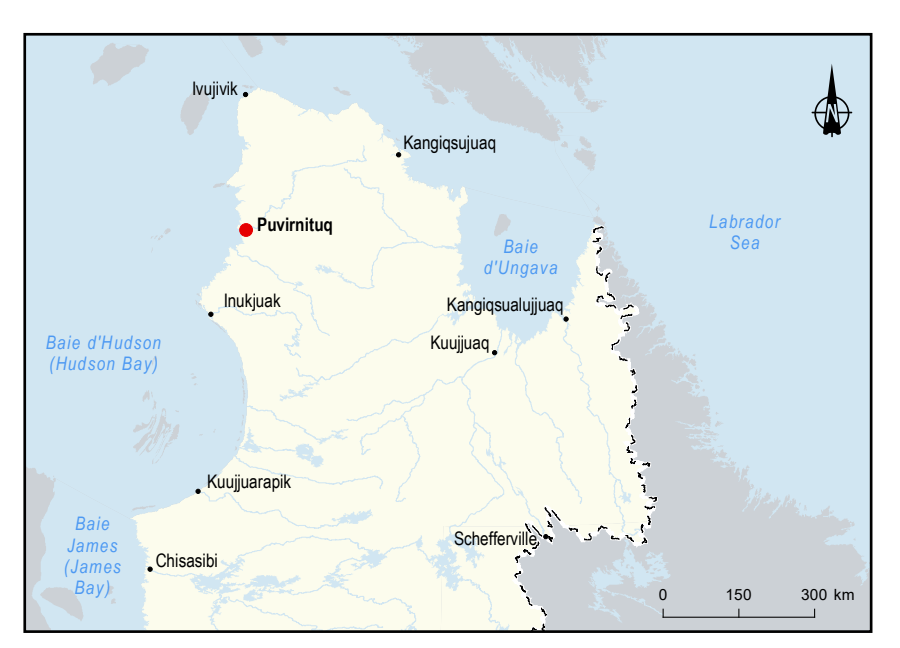
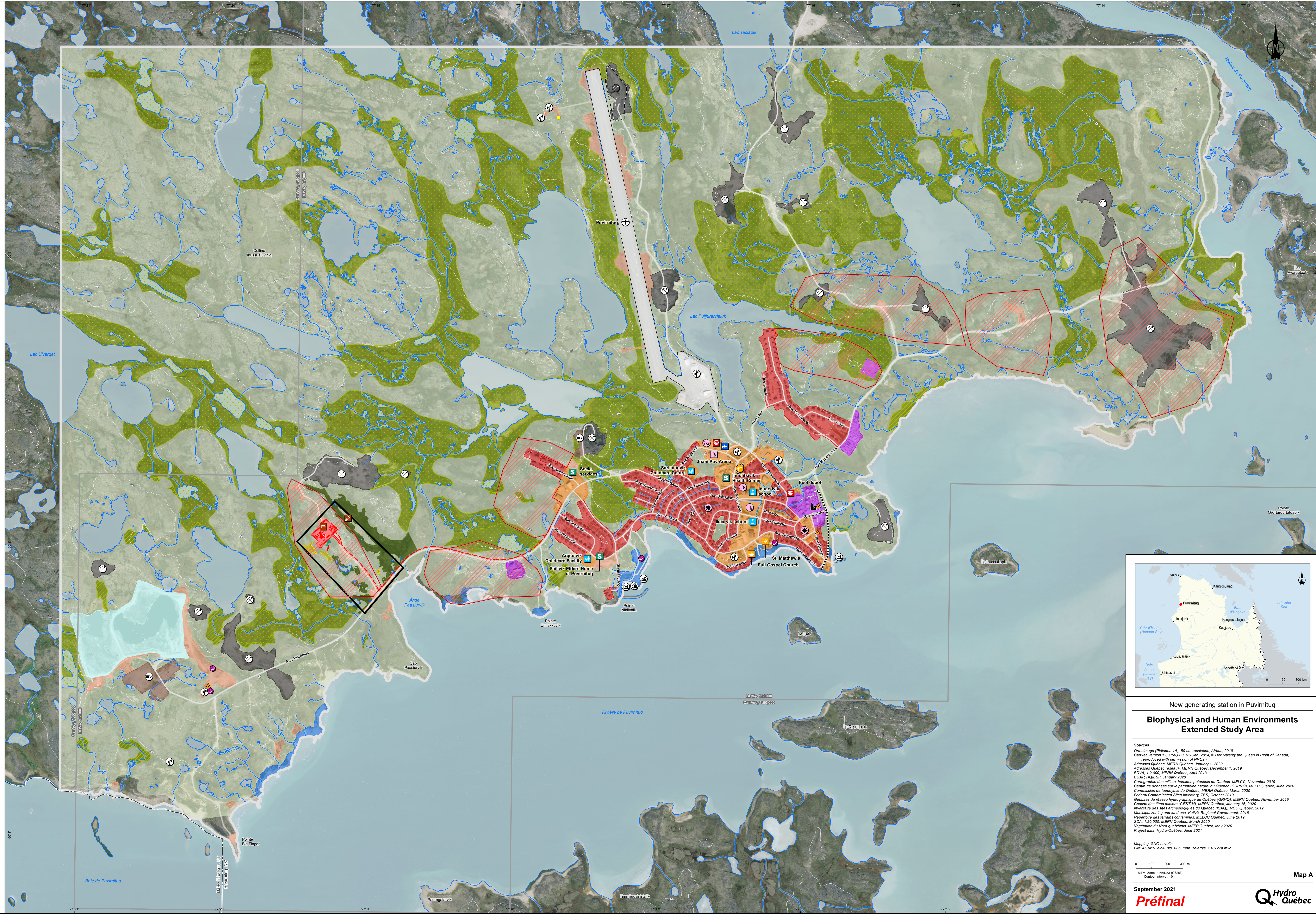
- Primary or secondary school
- Childcare center (CPE)
- Health or social services center

Archaeology

- Known archaeological site

Project components

- Planned thermal generating station
- Planned platform and infrastructure
- Planned distribution line (not part of the project currently under review)
- Extended study area
- Limited study area



New generating station in Puvirnituq

Biological and Human Environments Extended Study Area

Sources:

- Orthoimage (Péloides-1A), 50-cm resolution, Airbus, 2019
- CanVec version 12, 1:50,000, NRCan, 2014, © Her Majesty the Queen in Right of Canada, reproduced with permission of NRCan
- Adresses Québec, MERN Québec, January 1, 2020
- Adresses Québec: réseau+, MERN Québec, December 1, 2019
- BDVA, 1:2,000, MERN Québec, April 2013
- BSAP HQ/ESP, January 2020
- Cartographie des milieux humides potentiels du Québec, MELCC, November 2019
- Centre de données sur le patrimoine naturel du Québec (CDPNQ), MFFP Québec, June 2020
- Commission de toponymie du Québec, MERN Québec, March 2020
- Federal Contaminated Sites Inventory, TBS, October 2019
- Géobase du réseau hydrographique du Québec (GRHQ), MERN Québec, November 2019
- Gestion des titres miniers (GESTM), MERN Québec, January 16, 2020
- Inventaire des sites archéologiques du Québec (ISAQ), MCO Québec, 2019
- Municipal zoning and land use, Kativik Regional Government, 2016
- Rapport sur les terres contaminées, MELCC Québec, June 2019
- SDA, 1:20,000, MERN Québec, March 2020
- Végétation du Nord québécois, MFFP Québec, May 2020
- Project data, Hydro-Québec, June 2021

Mapping: SNC-Lavalin
 File: 450412_eicA_sh_005_mnn_zelargie_210727a.mxd

0 100 200 300 m
 MTR, Zone 9, NAD83 (CSRS)
 Contour interval: 10 m

September 2021
Préfin

Map A
Hydro Québec

*In order to protect special-status species from harvesting and habitat modification, data from the Ministère des Forêts, de la Faune et des Parcs du Québec (MFFP), other agencies or field surveys are not illustrated, despite their presence on the map.

**To protect the municipal drinking water intakes and in accordance with directives received from the MDDELCC on the use of these data, the municipal drinking water intakes are not illustrated, despite their presence on the map.

Document for information purposes only. For any other use, please contact Géomatique at Hydro-Québec.